



GWM

See You Out There



Tank 300

GO WITH MORE

Tank 300. See You Out There.

Contents	Page 1
Introduction	Page 2
Design	Page 6
Performance	Page 8
Technology	Page 12
Safety	Page 14
Hybrid	Page 18
Colour	Page 20
Dimensions	Page 22
Specifications	Page 24

Say hello to GWM.



GWM is a world-renowned vehicle manufacturer capable of designing and producing SUVs, utes and powertrains simultaneously. At GWM, everything we do is grounded in our corporate philosophy: ‘improving little by little every day.’ From building world-class research and development systems, which enable continuous innovation, to following the ‘excessive investment’ principle, which drives industry leadership, we relentlessly put our philosophy into practice. With nearly 8 million sales to date, in more than 170 countries (and counting), we are the No. 1 SUV brand in the world’s largest market and have been for the past 9 years. Our brand vision is to pioneer global mobility solutions, which use innovative technology to deliver a more pleasurable driving experience. Through innovation and global collaboration, we continue to improve our vehicles’ reliability, safety, performance, design and technology.

Part luxury vehicle. Part 4x4. All Tank.



Introducing the first perfectly constructed luxury vehicle and rugged off roader. Finally, a true 4x4 wrapped in a world of comfort and superior technology without compromise.



On the outside, the Tank 300 is designed with crushing 4x4 good looks, muscular frame and impressive 18" Chrome Alloy Wheels*. Climb inside however, and you'll discover a world of pure luxury with its European designed cabin and soft, supple full grain Nappa leather accented seats*. Depending on the model, the heating and cooled front seats will help you cope with any climate. And the 8-way adjustable driver's seat*, combined with the cockpit-inspired Aviation gear lever, will reignite your passion for driving as you set off on every adventure.

Rugged good looks. Soft, supple interior.

*Ultra variant only

Purebred performance.



Powered by a responsive 2.0 litre turbo four-cylinder petrol engine with an electric motor, delivering 258kW and 615Nm of torque*, the Tank 300 will outperform just about anything in its class. Thanks to the all-terrain control system with 9 driving modes*, it will go anywhere you point it. And after years of intensive innovation and development, GWM's independently designed Dedicated Hybrid Technology (DHT) is now an all-round master in high-efficiency, high-performance hybrid solutions.

*Hybrid variants only

Powered by a responsive 2.0 litre turbo four-cylinder petrol engine with an electric motor, delivering 258kW*.

*Hybrid variants only



Overseas model shown.

Advanced technology for driving enjoyment.

The Tank 300 contains all the tech you need for pure driving pleasure. For starters, the large crystal clear 12.3 inch colour touchscreen lets you easily experience all your infotainment on demand. The Infinity® 9-speaker sound system* provides incredible audio quality whatever your playlist. And the wireless charging* station means you'll never run out of phone battery inside your vehicle again. Plus, depending on the model, the driver seat memory and massage feature will keep you comfortable and relaxed each and every drive.

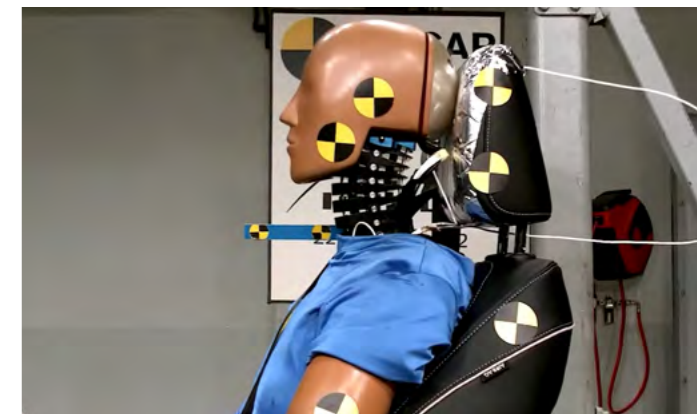
*Ultra variants only



Built to the safest standards.



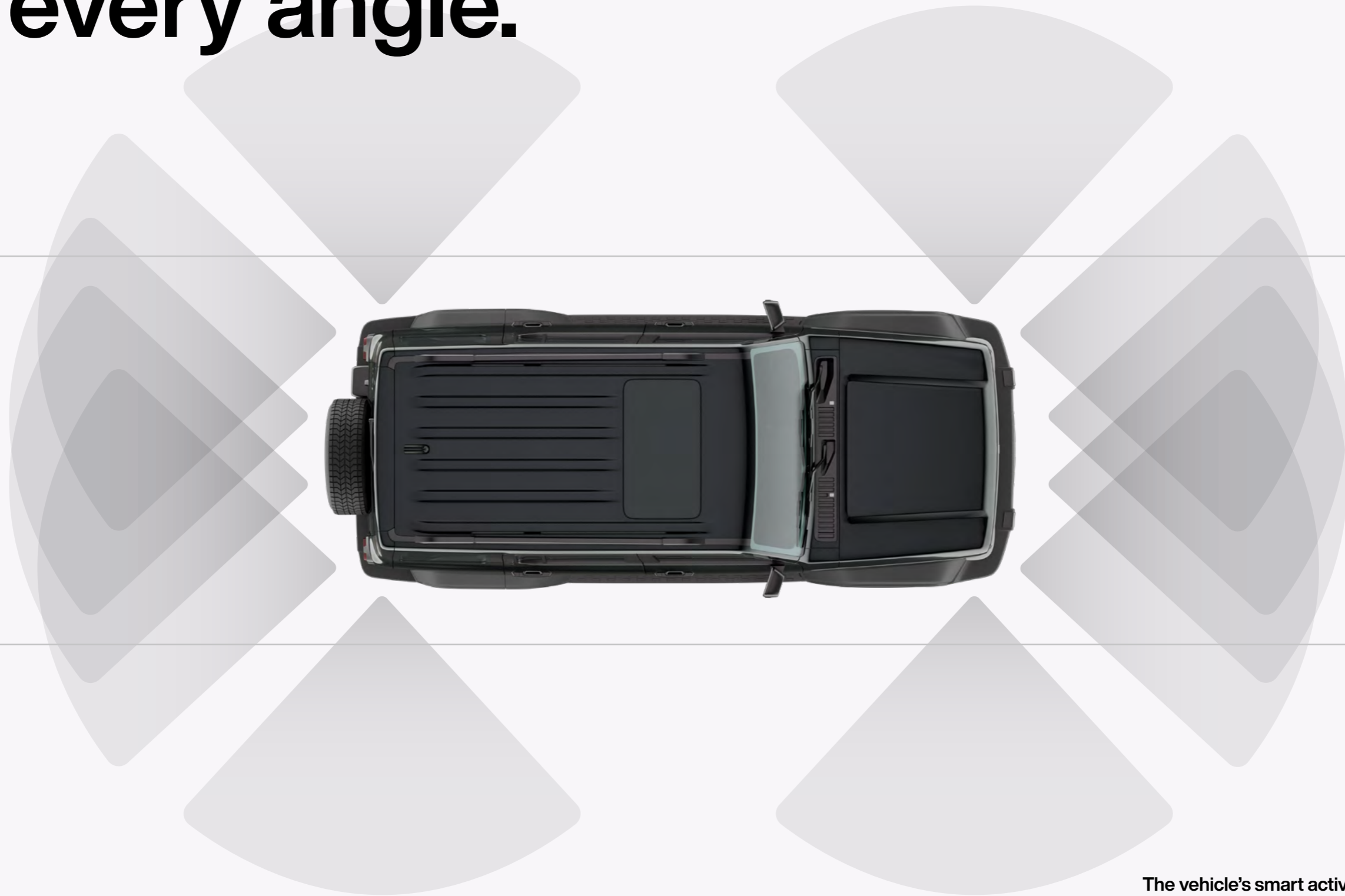
ANCAP Safety test



ANCAP Safety test

This incredibly rugged and luxurious 4x4 is also unbelievably safe. Having achieved the highest possible 5 star safety rating by ANCAP, the Tank 300 comes with a comprehensive suite of safety systems designed to protect you and others on the road. Advanced safety features including Intelligent Adaptive Cruise Control, Rear Collision Warning, Lane Keep Assist and Traffic Sign Recognition, all combine to give you peace of mind knowing that GWM is looking out for you and everyone else around you every time you drive.

Protection from every angle.



The vehicle's smart active and passive safety technology including a 360-view camera, Auto Emergency Braking, Rear Cross Traffic Assist with Braking, Lane Departure Warning and Blind Spot Detection, will let you know who or what's in front, behind and either side of you every time you take the Tank 300 out for a drive.

Driven by a new energy.

GWM's Dedicated Hybrid Technology (DHT) is at the core of the entire electrification roadmap. Each highly integrated, multi-mode petrol-electric hybrid engine comes with a powerful Lithium-Ion battery providing greater performance, increased efficiency and minimal noise. Perfect for urban driving and off-road cruising, the multi-mode hybrid transmission delivers incredibly smooth, responsive take-offs and superior acceleration when you need it, all the while saving on fuel. Backed by advanced technology and safety, the Tank 300 knows no limits.



GWM vehicles are available in a range of stunning contemporary colours.



Premium Colour (+\$595)

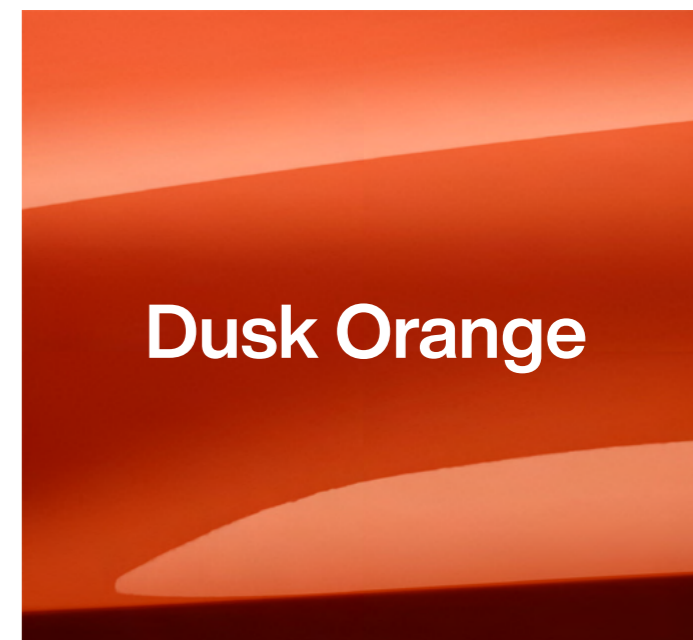
Standard Colour



Premium Colour (+\$595)



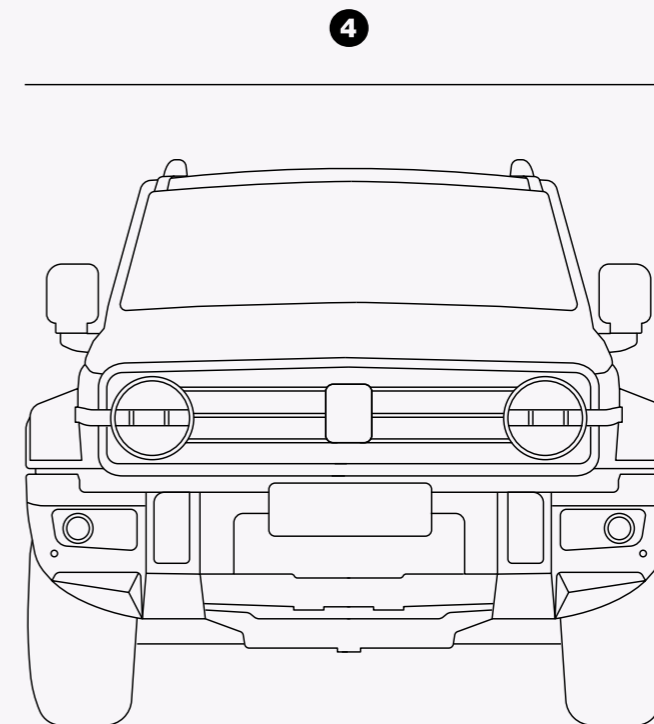
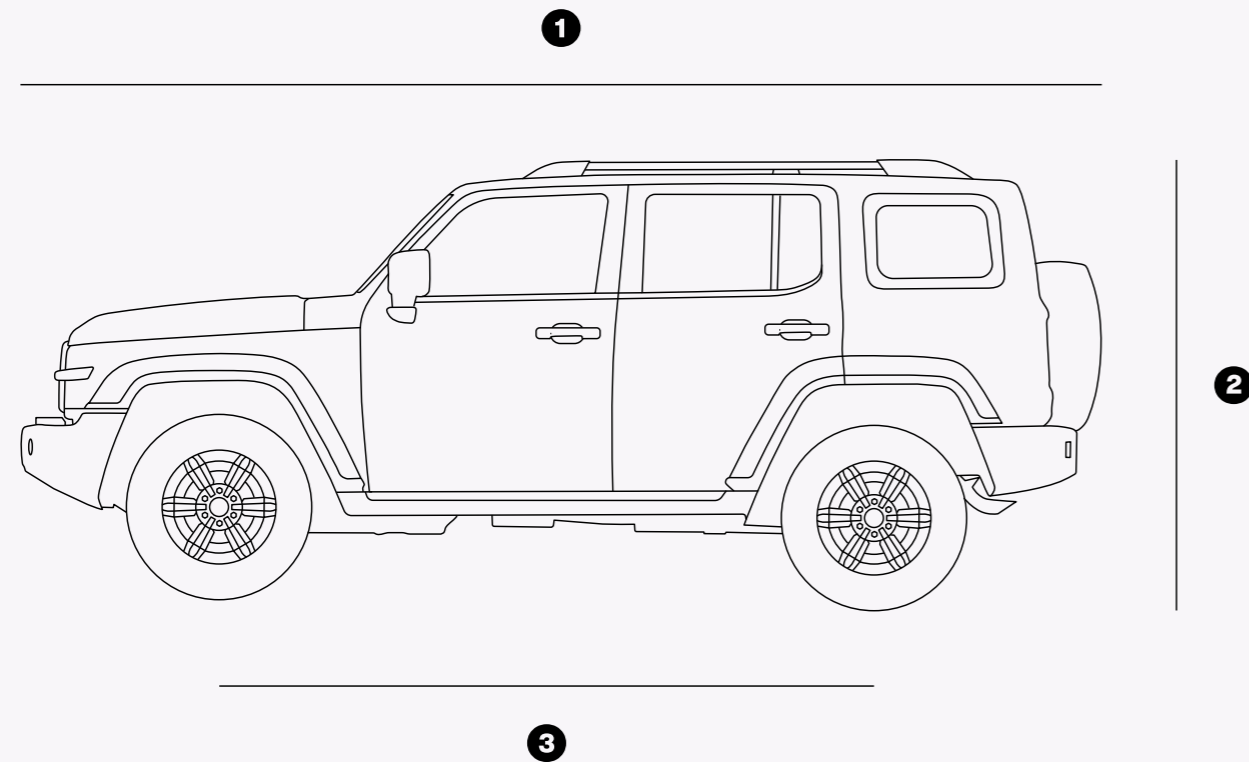
Premium Colour (+\$595)



Premium Colour (+\$595)

Colour.

- ① Length: 4760mm
- ② Height: 1903mm
- ③ Wheelbase: 2750mm
- ④ Width: 1930mm



Dimensions.

